

**COMPOSITE REGIONAL CENTRE FOR SKILL
DEVELOPMENT, REHABILITATION & EMPOWERMENT OF
PERSONS WITH DISABILITIES,
(CRC) - Andaman & Nicobar Islands**

(Under the Administrative Control of NIEPMD (Divyangjan), Chennai: NAAC Accredited; ISO 9001:2015 Certified)

Department of Empowerment of Persons with Disabilities (Divyangjan)

Ministry of Social Justice & Empowerment, Govt. of India

Brookshabad, Port Blair, South Andaman – 744112



Consolidated Report for the month of
January-2022

BENEFICIARIES DETAILED SERVICES

Table 1: DETAILS OF TOTAL REGISTERED CLIENTS (NEW CASE) FOR THE MONTH OF January 2022

Departments / Units	New		
	Male	Female	Total
Registered Clients	01	02	03

Table 2: DETAILS OF **BENEFICIARIES REGISTRATION (NEW CASE & FOLLOW UP) FOR THE MONTH OF January 2022**

Departments / Units	New			Follow up		
	Male	Female	Total	Male	Female	Total
Service Registration	10	12	22	275	69	344

Table 3: DETAILS OF **SUPPROTING SERVICE FOR THE MONTH OF January 2022**

Departments / Units	Supportive Services		
	Male	Female	Total
Service Registration	7	3	10

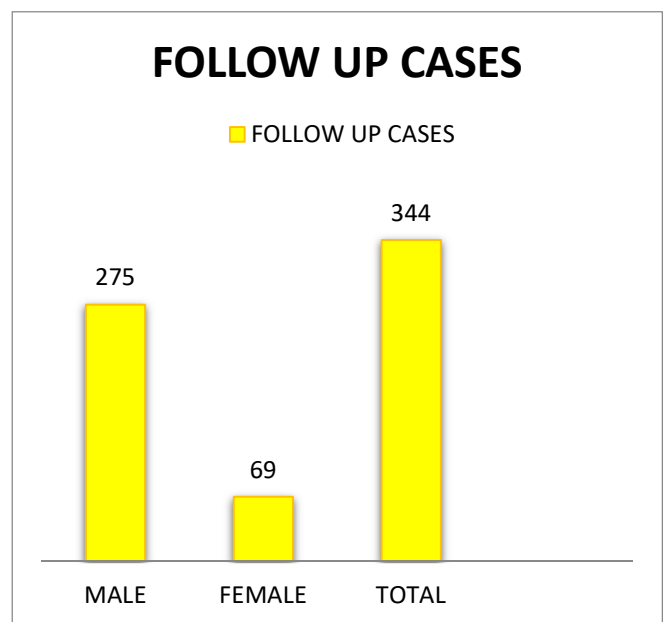
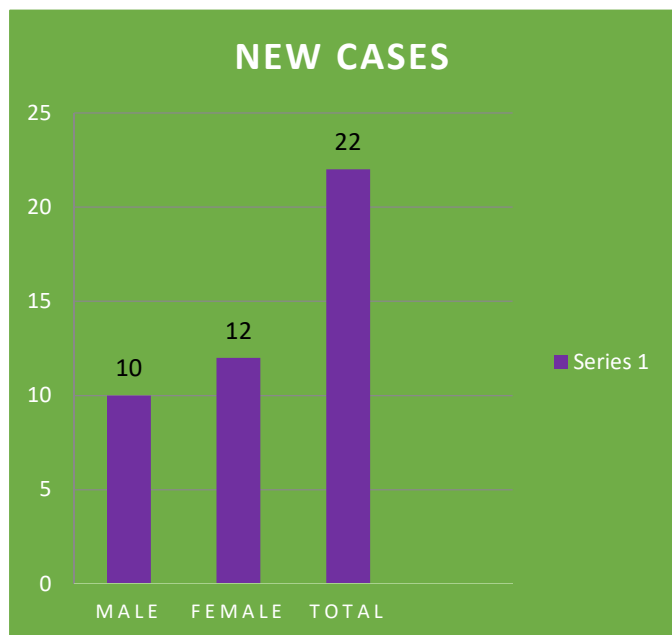


Table 4: DETAILS OF BENEFICIARIES SERVICES OF EACH DEPARTMENT FOR THE MONTH OF January 2022

Departments / Units	New			Follow up			Supportive Services		
	Male	Female	Total	Male	Female	Total	Male	Female	Total
Clinical Psychology	1	1	2	14	9	23	0	0	0
Special Education	1	2	3	191	36	227	0	0	0
Speech & Hearing	0	0	0	0	0	0	0	0	0
PMR	0	0	0	0	0	0	0	0	0
Physiotherapy	0	2	2	67	24	91	0	0	0
Occupational Therapy	6	3	9	1	0	1	0	0	0
P & O	1	2	3	2	0	2	7	3	10
Social Work Unit	1	2	3	0	0	0	0	0	0
Vocational Training Unit	0	0	0	0	0	0	0	0	0
Developmental Therapy	0	0	0	0	0	0	0	0	0
TOTAL	10	12	22	275	69	344	7	3	10

Table 5: DETAILS OF SHORT TERM TRAINING PROGRAMMES / AWARENESS GENERATION PROGRAMS / CAMPS / OTHER PROGRAMME CONDUCTED BY CRC-A&N ISLANDS FOR THE MONTH OF January 2022

Sl. No	Title of Programme	Date	Venue	Name of Dept.	No of beneficiaries		
					M	F	TOTAL
1.	Republic Day	26.01.2022	CRC Brookashabad	All Dept	11	09	20
2	2 nd Annual Day of CRC A&N Islands	27.01.2022	CRC Brookashabad	All Dept	19	11	30

Table 06: CASTE WISE NEW REGISTERED BENEFICIARIES SERVICES FOR THE MONTH OF January 2022

Departments / Units	New				
	GEN	OBC	SC	ST	TOTAL
Service Registrations	16	5	1	0	22

Table 07: CASTE WISE FOLLOW UP BENEFICIARIES SERVICES FOR THE MONTH OF January 2022

Departments / Units	Follow Up				
	GEN	OBC	SC	ST	TOTAL
Service Registrations	227	114	3	0	344

Table 08: CASTE WISE NEW BENEFICIARIES SERVICES OF EACH DEPARTMENT FOR THE MONTH OF January 2022

Departments / Units	New				
	GEN	OBC	SC	ST	TOTAL
Clinical Psychology	2	0	0	0	2
Special Education	2	1	0	0	3
Speech & Hearing	0	0	0	0	0
PMR	0	0	0	0	0
Physiotherapy	2	0	0	0	2
Occupational Therapy	5	4	0	0	9
P & O	2	0	1	0	3
Social Work Unit	3	0	0	0	3
Vocational Training Unit	0	0	0	0	0
Developmental Therapy	0	0	0	0	0
TOTAL	16	5	1	0	22

Table 09: CASTE WISE FOLLOW UP BENEFICIARIES SERVICES OF EACH DEPARTMENT FOR THE MONTH OF January 2022

Departments / Units	Follow Up				
	GEN	OBC	SC	ST	TOTAL
Clinical Psychology	20	3	0	0	23
Special Education	129	98	0	0	227
Speech & Hearing	0	0	0	0	0
PMR	0	0	0	0	0
Physiotherapy	75	13	3	0	91

Occupational Therapy	1	0	0	0	1
P & O	2	0	0	0	2
Social Work Unit	0	0	0	0	0
Vocational Training Unit/DAIL	0	0	0	0	0
Developmental Therapy	0	0	0	0	0
Total	227	114	3	0	344

Table 10: AGE WISE NEW REGISTERED BENEFICIARIES SERVICES FOR THE MONTH OF January 2022

Departments / Units	New				TOTAL
	0 to 6	7 to 18	19 to 59	60 & ABOVE	
Service Registrations	15	6	0	1	22

Table 11: AGE WISE FOLLOW UP BENEFICIARIES SERVICES FOR THE MONTH OF January 2022

Departments / Units	Follow Up				TOTAL
	0 to 6	7 to 18	19 to 59	60 & ABOVE	
Service Registrations	145	173	26	0	344

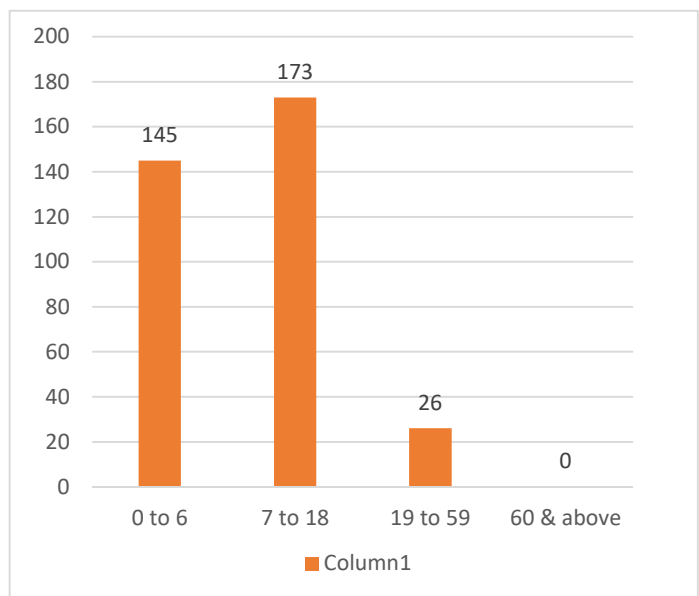
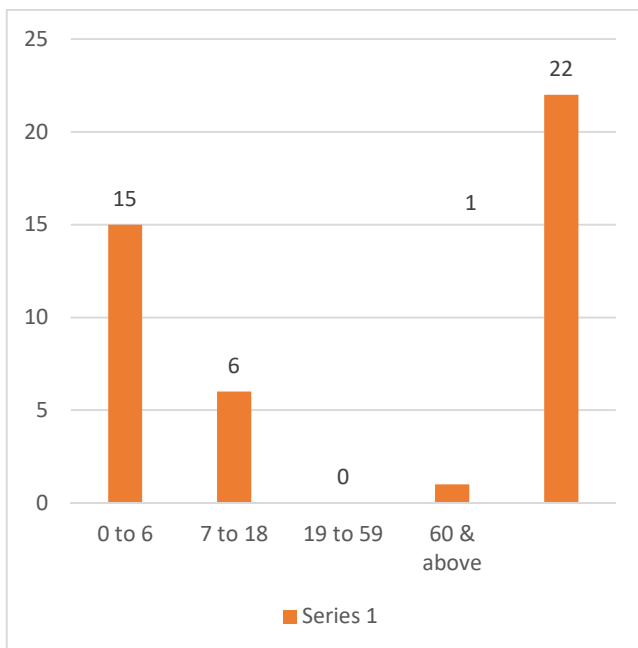


Table 12 : AGE WISE NEW BENEFICIARIES SERVICES OF EACH DEPARTMENT FOR THE MONTH OF January 2022

Departments / Units	New				TOTAL
	0 to 6	7 to 18	19 to 59	60 & ABOVE	
Clinical Psychology	2	0	0	0	2
Special Education	3	0	0	0	3
Speech & Hearing	0	0	0	0	0
PMR	0	0	0	0	0
Physiotherapy	1	1	0	0	2
Occupational Therapy	4	5	0	0	9
P & O	2	0	0	1	3
Social Work Unit	3	0	0	0	3
Vocational Training Unit	0	0	0	0	0
Developmental Therapy	0	0	0	0	0
TOTAL	15	6	0	1	22

Table 13 : AGE WISE FOLLOW UP BENEFICIARIES SERVICES OF EACH DEPARTMENT FOR THE MONTH OF January 2022

Departments / Units	Follow Up				TOTAL
	0 to 6	7 to 18	19 to 59	60 & ABOVE	
Clinical Psychology	10	10	3	0	23
Special Education	74	130	23	0	227
Speech & Hearing	0	0	0	0	0
PMR	0	0	0	0	0
Physiotherapy	60	31	0	0	91

Occupational Therapy	1	0	0	0	1
P & O	0	2	0	0	2
Social Work Unit	0	0	0	0	0
Vocational Training Unit/ DAIL	0	0	0	0	0
Developmental Therapy	0	0	0	0	0
Total	145	173	26	0	344

Table 14 : ADIP BENEFICIARIES FOR THE MONTH OF January 2022

S.no	Disabilities Covered	Male	Female	Total
1.	Hearing Impaired	02	02	04
Total		02	02	04

Table 15: DISABILITY WISE CLASSIFICATION FOR THE MONTH OF January 2022

Type of Disability	New			Follow up		
	M	F	T	M	F	T
LOCOMOTOR DISABILITY	1	0	1	0	0	0
LEPROSY CURED	0	0	0	0	0	0
CP	0	1	1	42	38	80
DWARFISM	1	0	1	0	0	0
MUSCULAR DYSTROPHY	0	0	0	0	0	0
BLINDNESS	0	0	0	0	0	0
LOW VISION	1	1	2	0	0	0
HARD OF HEARING	0	0	0	2	0	2
SPEECH & LG. DISABILITY	0	0	0	0	0	0
INTELLECTUAL DISABILITY (MR)	1	0	1	48	5	53
SPECIFIC LD	0	0	0	18	0	18
ASD	0	0	0	88	2	90
MENTAL ILLNESS	1	0	1	7	3	10
PARKINSON'S DISEASE	0	0	0	0	0	0
HEMOPHILIA	0	0	0	0	0	0
THALASEMIA	1	0	1	0	0	0
SICKLE CELL DISEASE	0	0	0	0	0	0
MULTIPLE DISABILITIES	4	7	11	29	18	47
GDD	1	2	3	2	3	5
OTHERS	0	0	0	39	0	39
TOTAL	10	12	22	275	69	344

Table 16: DISABILITY WISE CLASSIFICATION NEW BENEFICIARIES FOR THE MONTH OF January 2022

Dept	Clinical Psychology			Special Education			Sp. Language Communication.			PMR			Physiotherapy		
	M	F	T	M	F	T	M	F	T	M	F	T	M	F	T
LOCOMOTOR DISABILITY	0	0	0	0	0	0	0	0	0	0	0	0	0	0	0
LEPROSY CURED	0	0	0	0	0	0	0	0	0	0	0	0	0	0	0
CP	0	0	0	0	0	0	0	0	0	0	0	0	0	0	0
DWARFISM	0	0	0	0	0	0	0	0	0	0	0	0	0	0	0
MUSCULAR DYSTROPHY	0	0	0	0	0	0	0	0	0	0	0	0	0	0	0
BLINDNESS	0	0	0	0	0	0	0	0	0	0	0	0	0	0	0
LOW VISION	0	0	0	0	0	0	0	0	0	0	0	0	0	0	0
HARD OF HEARING	0	0	0	0	0	0	0	0	0	0	0	0	0	0	0
SPEECH & LG. DISABILITY	0	0	0	0	0	0	0	0	0	0	0	0	0	0	0
INTELLECTUAL DISABILITY (MR)	0	0	0	0	0	0	0	0	0	0	0	0	0	0	0
SPECIFIC LD	0	0	0	0	0	0	0	0	0	0	0	0	0	0	0
ASD	0	0	0	0	0	0	0	0	0	0	0	0	0	0	0
MENTAL ILLNESS	0	0	0	0	0	0	0	0	0	0	0	0	0	0	0
PARKINSON'S DISEASE	0	0	0	0	0	0	0	0	0	0	0	0	0	0	0
HEMOPHILIA	0	0	0	0	0	0	0	0	0	0	0	0	0	0	0
THALASEMIA	0	0	0	0	0	0	0	0	0	0	0	0	0	0	0
SICKLE CELL DISEASE	0	0	0	0	0	0	0	0	0	0	0	0	0	0	0
MULTIPLE DISABILITIES	1	1	2	1	1	2	0	0	0	0	0	0	0	2	2
GDD	0	0	0	0	1	1	0	0	0	0	0	0	0	0	0
OTHERS	0	0	0	0	0	0	0	0	0	0	0	0	0	0	0
TOTAL	1	1	2	1	2	3	0	0	0	0	0	0	0	2	2

Table 16(Contd...): DISABILITY WISE CLASSIFICATION NEW BENEFICIARIES FOR THE MONTH OF January 2022

Dept	OT			P & O			Social Work			VTU/DAIL			Developmental Therapy		
	M	F	T	M	F	T	M	F	T	M	F	T	M	F	T
LOCOMOTOR DISABILITY	0	0	0	1	0	1	0	0	0	0	0	0	0	0	0
LEPROSY CURED	0	0	0	0	0	0	0	0	0	0	0	0	0	0	0
CP	1	1	2	0	0	0	0	0	0	0	0	0	0	0	0
DWARFISM	0	0	0	0	0	0	0	0	0	0	0	0	0	0	0
MUSCULAR DYSTROPHY	0	0	0	0	0	0	0	0	0	0	0	0	0	0	0
BLINDNESS	0	0	0	0	0	0	0	0	0	0	0	0	0	0	0
LOW VISION	0	0	0	0	0	0	0	1	1	0	0	0	0	0	0
HARD OF HEARING	0	0	0	0	0	0	0	0	0	0	0	0	0	0	0
SPEECH & LG. DISABILITY	0	0	0	0	0	0	0	0	0	0	0	0	0	0	0
INTELLECTUAL DISABILITY (MR)	1	0	1	0	0	0	0	0	0	0	0	0	0	0	0
SPECIFIC LD	0	0	0	0	0	0	0	0	0	0	0	0	0	0	0
ASD	2	0	2	0	0	0	1	0	1	0	0	0	0	0	0
MENTAL ILLNESS	0	0	0	0	0	0	0	0	0	0	0	0	0	0	0
PARKINSON'S DISEASE	0	0	0	0	0	0	0	0	0	0	0	0	0	0	0
HEMOPHILIA	0	0	0	0	0	0	0	0	0	0	0	0	0	0	0
THALASEMIA	0	0	0	0	0	0	0	0	0	0	0	0	0	0	0
SICKLE CELL DISEASE	0	0	0	0	0	0	0	0	0	0	0	0	0	0	0
MULTIPLE DISABILITIES	1	2	3	0	1	1	0	1	1	0	0	0	0	0	0
GDD	0	0	0	0	1	1	0	0	0	0	0	0	0	0	0
OTHERS	1	0	1	0	0	0	0	0	0	0	0	0	0	0	0
TOTAL	6	3	9	1	2	3	1	2	3	0	0	0	0	0	0

Table 17: DISABILITY WISE CLASSIFICATION FOLLOW UP BENEFICIARIES FOR THE MONTH OF January 2022

Dept	Clinical Psychology			Special Education			Sp. Language Communication.			PMR			Physiotherapy		
	M	F	T	M	F	T	M	F	T	M	F	T	M	F	T
LOCOMOTOR DISABILITY	0	0	0	0	0	0	0	0	0	0	0	0	0	0	0
LEPROSY CURED	0	0	0	0	0	0	0	0	0	0	0	0	0	0	0
CP	0	1	1	8	17	25	0	0	0	0	0	0	34	20	54
DWARFISM	0	0	0	0	0	0	0	0	0	0	0	0	0	0	0
MUSCULAR DYSTROPHY	0	0	0	0	0	0	0	0	0	0	0	0	0	0	0
BLINDNESS	0	0	0	0	0	0	0	0	0	0	0	0	0	0	0
LOW VISION	0	0	0	0	0	0	0	0	0	0	0	0	0	0	0
HARD OF HEARING	0	0	0	0	0	0	0	0	0	0	0	0	2	0	2
SPEECH & LG. DISABILITY	0	0	0	0	0	0	0	0	0	0	0	0	0	0	0
INTELLECTUAL DISABILITY	4	1	5	43	4	47	0	0	0	0	0	0	0	0	0
SPECIFIC LD	0	0	0	10	0	10	0	0	0	0	0	0	8	0	8
ASD	4	2	6	68	0	68	0	0	0	0	0	0	16	0	16
MENTAL ILLNESS	0	3	3	0	0	0	0	0	0	0	0	0	7	0	7
PARKINSON'S DISEASE	0	0	0	0	0	0	0	0	0	0	0	0	0	0	0
HEMOPHILIA	0	0	0	0	0	0	0	0	0	0	0	0	0	0	0
THALASEMIA	0	0	0	0	0	0	0	0	0	0	0	0	0	0	0
SICKLE CELL DISEASE	0	0	0	0	0	0	0	0	0	0	0	0	0	0	0
MULTIPLE DISABILITIES	4	2	6	23	12	35	0	0	0	0	0	0	0	4	4
GDD	2	0	2	0	3	3	0	0	0	0	0	0	0	0	0
OTHERS	0	0	0	39	0	39	0	0	0	0	0	0	0	0	0
TOTAL	14	9	23	191	36	227	0	0	0	0	0	0	67	24	91

Table 17 (Contd...): DISABILITY WISE CLASSIFICATION FOLLOW UP BENEFICIARIES FOR THE MONTH OF January 2022

Dept	OT			P & O			Social Work			VTU/DAIL			Developmental Therapy		
	M	F	T	M	F	T	M	F	T	M	F	T	M	F	T
LOCOMOTOR DISABILITY	0	0	0	0	0	0	0	0	0	0	0	0	0	0	0
LEPROSY CURED	0	0	0	0	0	0	0	0	0	0	0	0	0	0	0
CP	0	0	0	0	0	0	0	0	0	0	0	0	0	0	0
DWARFISM	0	0	0	0	0	0	0	0	0	0	0	0	0	0	0
MUSCULAR DYSTROPHY	0	0	0	0	0	0	0	0	0	0	0	0	0	0	0
BLINDNESS	0	0	0	0	0	0	0	0	0	0	0	0	0	0	0
LOW VISION	0	0	0	0	0	0	0	0	0	0	0	0	0	0	0
HARD OF HEARING	0	0	0	0	0	0	0	0	0	0	0	0	0	0	0
SPEECH & LG. DISABILITY	0	0	0	0	0	0	0	0	0	0	0	0	0	0	0
INTELLECTUAL DISABILITY (MR)	1	0	1	0	0	0	0	0	0	0	0	0	0	0	0
SPECIFIC LD	0	0	0	0	0	0	0	0	0	0	0	0	0	0	0
ASD	0	0	0	0	0	0	0	0	0	0	0	0	0	0	0
MENTAL ILLNESS	0	0	0	0	0	0	0	0	0	0	0	0	0	0	0
PARKINSON'S DISEASE	0	0	0	0	0	0	0	0	0	0	0	0	0	0	0
HEMOPHILIA	0	0	0	0	0	0	0	0	0	0	0	0	0	0	0
THALASEMIA	0	0	0	0	0	0	0	0	0	0	0	0	0	0	0
SICKLE CELL DISEASE	0	0	0	0	0	0	0	0	0	0	0	0	0	0	0
MULTIPLE DISABILITIES	0	0	0	2	0	2	0	0	0	0	0	0	0	0	0
GDD	0	0	0	0	0	0	0	0	0	0	0	0	0	0	0
OTHERS	0	0	0	0	0	0	0	0	0	0	0	0	0	0	0
TOTAL	1	0	1	2	0	2	0	0	0	0	0	0	0	0	0

PHOTO EVIDENCES OF CRC ACTIVITIES

Clientele Therapeutic services of CRC





Photos of the Republic Day Celebration on 26th January 2022 at CRC Brookshabad

CRC A&N Islands celebrated the 73rd Republic Day at Premises of CRC A&N Islands at 7.30am. The celebration was attended by the staff members of the CRC A&N Islands and due to the sudden surge of COVID 19 cases in Andaman and Nicobar Islands and a reported case from the staff, the celebration was restricted only for the staff of CRC A&N Islands. The program was started with unfurls of the National Flag and then after the national anthem and pledge. Resident Nodal Officer, CRC A&N Islands has delivered a speech in which the importance of the day was described. The program was with distribution of the sweets among the attendees. In this program, all the COVID protocols were followed.

The photos of the Republic Day Celebration



COMPOSITE REGIONAL CENTRE FOR SKILL DEVELOPMENT, REHABILITATION & EMPOWERMENT OF PERSONS WITH DISABILITIES (CRC)- A&N Islands

Photos of the 2nd Anniversary Celebration on 27. 01.2022 at CRC Brookshabad

As part of the 2nd Annual Day celebration -2022 of CRC A&N Islands, CRC A&N Islands has organized various competitions for the registered clients and their parents through online mode. The event is named as **Show Your Talents-2022** which was held from 25th to 27th January, 2022. It was done through online mode due to sudden surge of COVID 19 cases in Andaman & Nicobar Islands. The details of the events are mentioned below:

1. Poster Making
2. Painting/ Drawing
3. Dancing/Singing
4. Plantation of Saplings

Photos of the 2nd Annual Day Programme



